

## THE EASTMAN® **Air Lift Conversion Kit** MODEL 820C1-124

### Installation Guide

The **Air Lift Conversion Kit** is shipped complete with all parts necessary for proper setup and operation. Before installation can take place, it is important that you carefully read and follow the instructions in this manual in the same sequence in which they are presented. Familiarize yourself with all the components contained in this kit.

#### Preparation

Tools Required:

- 1) Hand Drill
- 2) .221 Dia. Drill Bit
- 3) Measuring Tape or Scale
- 4) Allen Wrench Set
- 5) Screw Driver
- 6) Set of Wrenches

Disconnect the (air or electrical) power and remove the cutting head from the track. Remove the track from the front and back lifter assemblies. Loosen and remove the lift belt on the front lift assembly. Remove the front lift assembly from the table. This lift assembly will be converted to an air lift assembly and placed on the back (non-operators) side of the table.

#### Lift Conversion

Remove the components as shown in figure 1. Drill (4) .221 Dia. holes in the frame as shown in figure 2. Assemble the new air lift components as shown in figure 3.

#### Installation

Mount the new air lift assembly on the back (non-operator) side on the table. This will lift the weight of the cutting head and relieve stress on the lifting belt. Mount the other lifter assembly, belt, track and cutting head.

Mount the control valve and air regulator to the table in a desired position for the machine operator. Connect the 1/4" air tubing from the regulator to port 1 on the control valve. Connect the 1/4" air tubing from the control valve (port 2) to the lower port on the air lift cylinder.

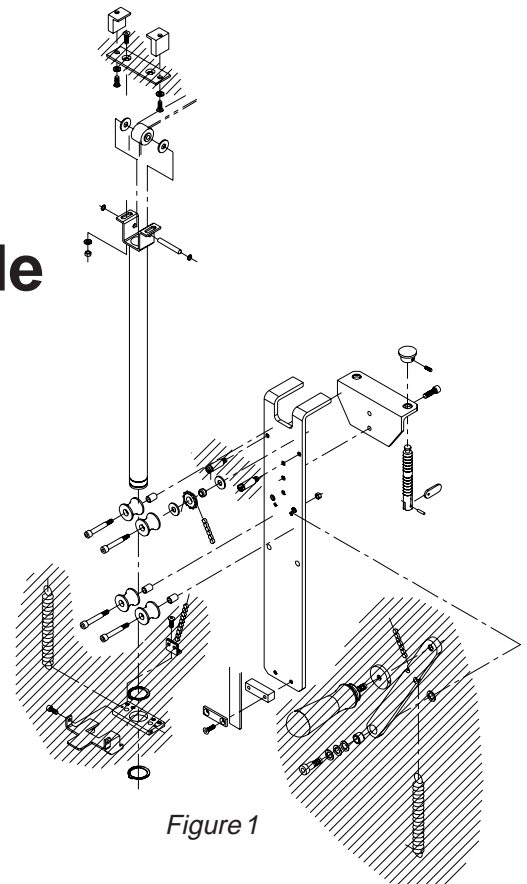


Figure 1

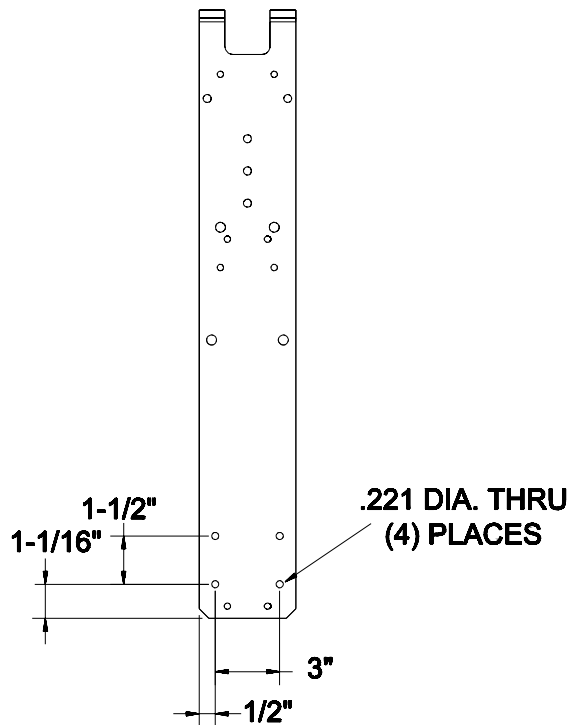


Figure 2

From the library of: Diamond Needle Corp

# Back Lifter Assembly

## 840C1-17

ITEM	PART NO.	DESCRIPTION	QTY.
1	46C3-51	Clamp Block	2*
2	79C11-7	Lift Clamp Block Plate	1
3	12C1-19	Washer, Lock 1/4	2*
4	307C18-1	Screw, Button Head, 1/4-20 x 3/4	2*
5	302C18-3	Screw, Flat Head, 1/4-20 x 3/4	2
6	181C4	Lift Belt	A/R*
7	41C5-14	Belt Roller	1*
8	12C15-108	Washer, Flat	2*
9	11C2-54	Roll Shaft	1*
10	18C6-47	Grip Ring	2*
11	12C1-19	Washer, Lock 1/4	2*
12	4C2-58	Nut, Hex 1/4-20	2*
13	763C1-27	Lift Tube Assembly	1*
14	311C14-2	Screw, Shoulder 1/4 x 1 1/4 long	4*
15	70C4-45	Guide Roller	4*
16	55C4-118	Roller Spacer	4*
17	18C6-65	Retaining Ring	1*
18	79C12-295	Lift Frame	1*
19	4C2-104	Nut, Hex #10-24	4*
20	191C2-1	Swivel Pad	2*
21	20C13-4	Setscrew, #8-32 x 3/16	2*
22	308C18-9	Screw, Socket Head 1/4-20 x 1/2	2*
23	205C1-2	Angle Bracket	1*
24	20C5-22	Clamp Screw	2*
25	57C7-49	Lever	2*
26	17C15-126	Roll Pin	2*

ITEM	PART NO.	DESCRIPTION	QTY.
27	773C1	Screw Clamp Assembly	2*
28	308C15-2	Screw, Socket Head #10-32 x 1/2	4
29	55C4-117	Belt Spacer	1*
30	33C10-59	Belt Holder	1*
31	302C15-7	Screw, Flat Head #10-32 x 1	2*
32	100-19-9	Mounting Bracket	1
33	100-18-2	Air Regulator	1
34	100-13-7	Fitting	3
35	27-H0409	Plug, 1/8" npt	1
36	67-26115-1	Air Control Valve	1
37	54-26156-4	Plate, Valve Mount	1
38	236C1-176	Decal, Air Lift Control	1
39	79C11-8	Cylinder Mount	1
40	275C4-1	Pivot Bracket	1
41	12C1-19	Lock Washer, 1/4	4
42	308C18-9	Screw, Socket Head 1/4-20 x 1/2	4
43	251C3-4	Flow Control Valve (Down Speed)	1
44	275C1-6	Lift Cylinder	1
45	251C3-1	Speed Muffler, (Up Speed)	1
46	275C4-2	Piston Clevis	1
47	373-99-12	Self Taping Hex Screw (not shown)	4

A/R - As Required

\* Indicates not included in kit.

Item numbers are for reference only.  
Please specify PART NUMBER when  
ordering replacement parts.

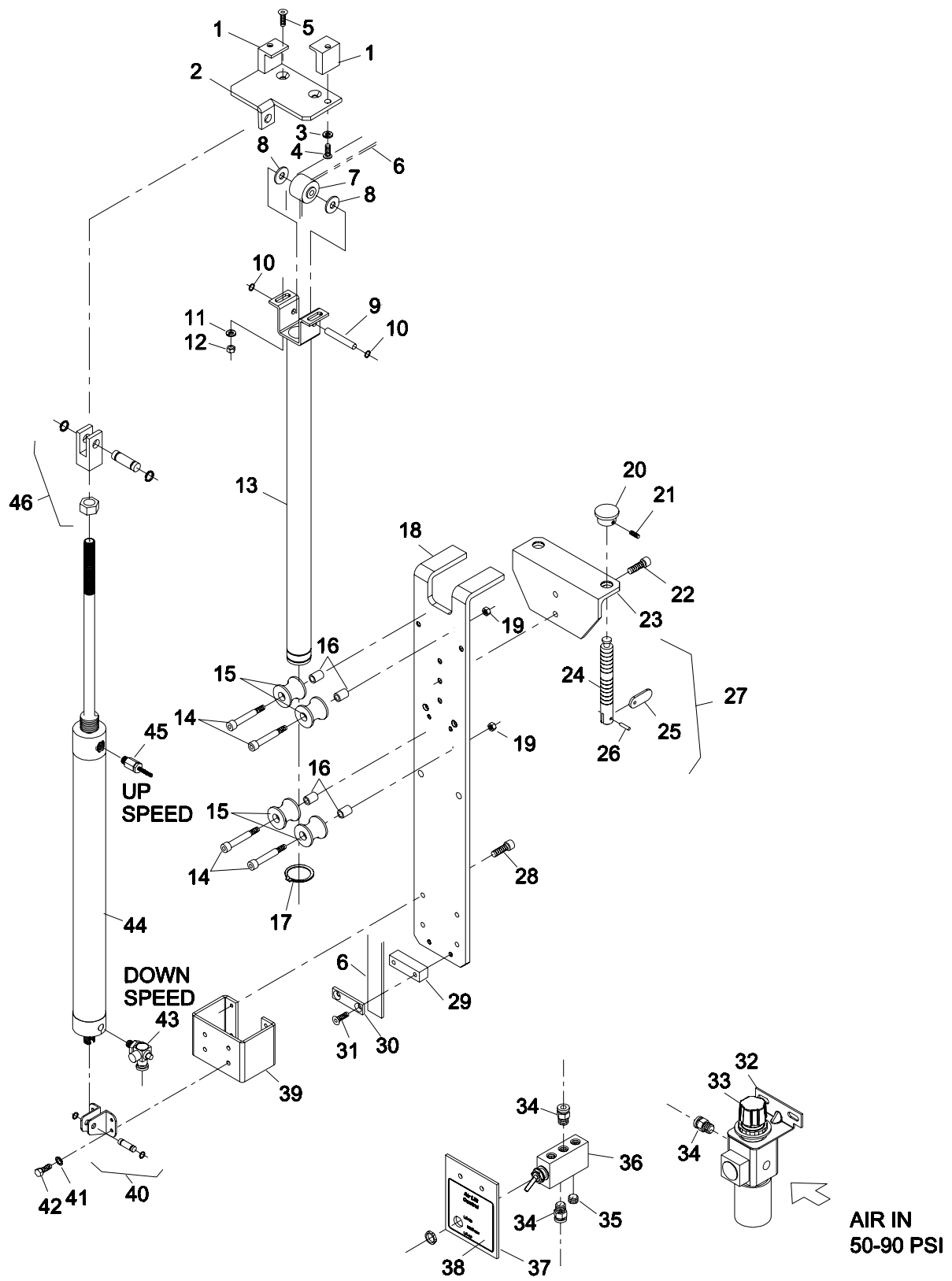


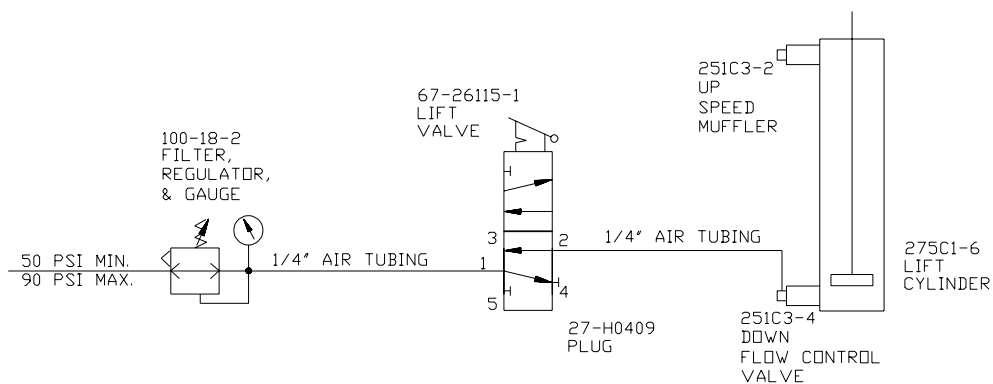
Figure 3

From the library of: Diamond Needle Corp

## Operation

Connect the air source (50-90 psi) to the air regulator. Test the lift for proper operation. If required, adjust the up/down lift speed, see figure 3. The speed muffler on the top port of the air cylinder will control the up speed. The flow control valve on the lower port of the air cylinder will control the down speed. After testing is complete the machine is ready for operation.

## Air Lift Pneumatic Diagram



**CAUTION**  
Disconnect and Relieve  
Air Pressure before servicing

**Limited Warranty.** Eastman warrants to the buyer that the equipment shall be free from defects in materials or workmanship for a period of 180 days commencing on the date of invoice. Any goods or parts claimed by the buyer to be defective must be returned to Eastman, freight charges prepaid, within the 180 day warranty period. If Eastman determines that the goods or parts are defective in materials or workmanship, Eastman's sole obligation under this warranty shall be, at Eastman's sole option, to repair or replace the defective goods or parts or to provide the buyer a credit equal to the portion of the purchase price allocable to the defective goods or parts. This warranty shall not apply if defects are caused by product misuse or neglect, if the machine has been altered or modified by the buyer, or if other than genuine Eastman belts, emery wheels, knives or parts are used in the machine. THIS WARRANTY IS THE ONLY WARRANTY APPLICABLE TO THIS PURCHASE. SELLER DISCLAIMS ALL OTHER WARRANTIES, EXPRESS OR IMPLIED, INCLUDING, BUT NOT LIMITED TO, THE IMPLIED WARRANTIES OF MERCHANTABILITY AND FITNESS FOR A PARTICULAR PURPOSE.

**Limitation of Liability.** Eastman's liability to the buyer, and the buyer's remedies from Eastman, whether in contract, negligence, tort, under any warranty or otherwise, shall be limited to the remedies provided in the foregoing Limited Warranty. In no event shall Eastman have any responsibility or liability to the buyer for (a) any special, indirect, incidental, or consequential damages, including, but not limited to, loss of use, revenue, or profit, even if Eastman has been advised of the possibility of such damages, or (b) any claim against the buyer by any third party. The price stated for the product sold is a consideration for limiting Eastman's liability.